

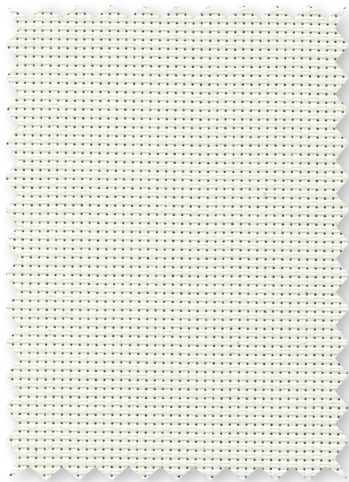


STYLE
7100
BLACKOUT FABRIC

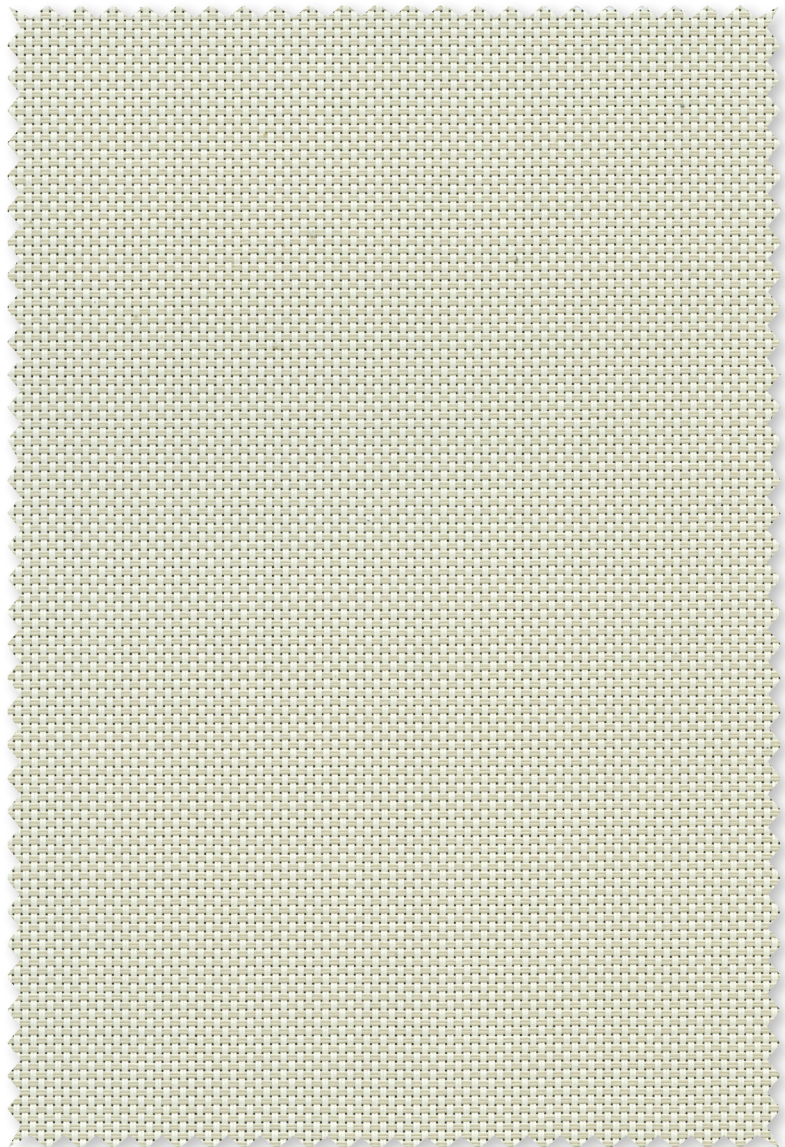
WEAVING
EXCELLENCE
WITH
INNOVATION



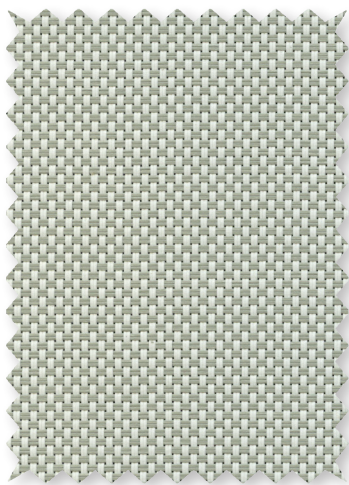
P02 **White**



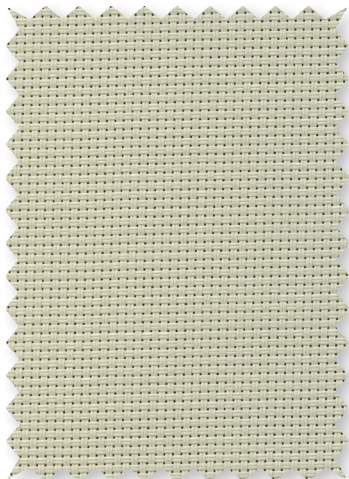
P04 **White/Bone**



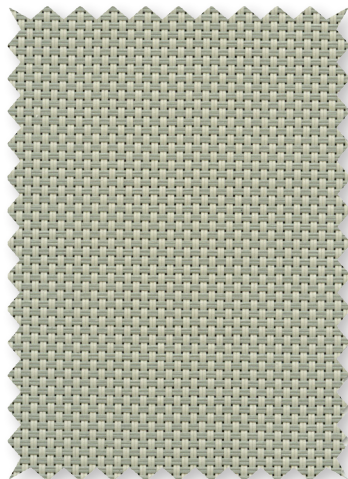
P05 **White/Platinum**



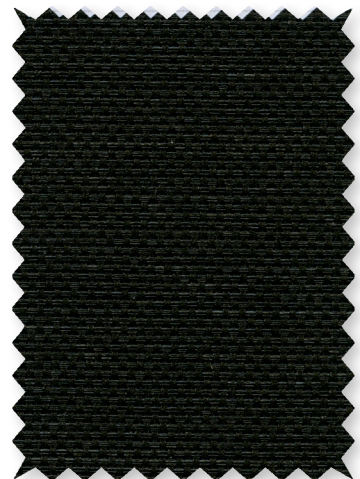
Q05 **Bone**



Q06 **Bone/Platinum**



V21 **Charcoal**



*Colors may vary based on individual computer settings and should only be used for general reference.

		SOLAR OPTICAL PROPERTIES				SHGC/G VALUE g-tot (glass & blind)	
Code	Color	TS	RS	AS	TV	SINGLE 1/4 CL	INSULATING 1 HA
STYLE 7100 - BLACKOUT							
P02	White	0	71	29	0	0.23	0.19
V21	Charcoal	0	71	29	0	0.23	0.19



PROTECTION THAT LIVES ON
MICROBAN®

Microban® antimicrobial protection inhibits the growth of stain-causing bacteria, mold and mildew on the shade.



PRODUCT CERTIFIED FOR
LOW CHEMICAL EMISSIONS
UL.COM/GG
UL 2818



MIF Seal of Approval



TS = Solar Transmittance
RS = Solar Reflectance
AS = Solar Absorptance
TV = Visual Transmittance

SHGC = Solar Heat Gain Coefficient

1/4 CL = 1/4" Clear Glass
1 HA = 1" Heat Absorbing Glass

Fabrics Installed Internally
Zero-Degree Profile Angle

For additional performance values, test references and technical definitions visit us at www.phifer.com.

STYLE 7100 SPECIFICATIONS

Style 7100 is a durable laminated blackout fabric that combines the woven texture of our Style 2000 as the face fabric with a durable vinyl backing to achieve total light blockage. Style 7100 coordinates easily with other SheerWeave fabrics when multi-purpose shades are needed. All Style 7100 colors have a white backing.

FIRE CLASSIFICATION	NFPA 701 TM#1 (small scale)	CAN/ULC-S 109 (large and small scale)
	NFPA 701 TM#2 (large scale)	IBC Section 803.1.1 (Class B Rating)
	NFPA 101 (Class B Rating)	BS 5867 Part 2 Type B Performance

Fire classifications are subject to change. Please go to phifer.com for the most current information.

BACTERIA AND FUNGAL RESISTANCE	ASTM E 2180	ASTM G21	AATCC30 Part 3	ASTM D 3273	ASTMG22
	GREENGUARD Mold and Bacteria Standard ASTM 6329 Style 2000 face includes Microban antimicrobial additives.				
ENVIRONMENTAL CERTIFICATION	GREENGUARD	GREENGUARD Gold			
	Certified to these standards for low chemical emissions into indoor air during product usage				
SAFE USE	RoHS/Directive 2002/95/EC			REACH (EC 1907/2006) compliant	
	ANSI/WCMA A 100.1-2007 for lead content				
	US Consumer Product Safety Commission Section 101				
WARRANTY	10-year interior				
ACOUSTICAL PERFORMANCE	NRC (Noise Reduction Coefficient) and SAA (Sound Absorption Average) tested in accordance with ASTM C423-09a				
UV PROTECTION	Seal of Approval by the Melanoma International Foundation (MIF) for effectiveness in preventing sun damage to the skin or eyes				
TRACKLESS	TrackLess Technology minimizes the fiberglass yarns' inherent tendencies to track when being rolled up in a shade. With TrackLess Technology these same fabrics now track less, roll up straighter and reduce shade fabrication time.				
	Due to the construction of Style 7100, some cupping may occur.				
	Railroading this fabric is not recommended				

STYLE 7100

WIDTHS	63" and 96" 160 cm and 243.8 cm
ROLL LENGTH	30 Linear Yards 27.4 Linear Meters
COMPOSITION	37% Fiberglass, 63% Vinyl on Fiberglass Laminated with a two-ply 100% PVC blackout film
MESH WEIGHT	21.6 oz/yd ² 732 g/m ²
FABRIC THICKNESS	0.025 in 0.64 mm
OPENNESS FACTOR	Opaque
ACOUSTICAL VALUE	NRC .05 / SAA .03

PHIFER
INCORPORATED

P. O. Box 1700 • Tuscaloosa, Alabama 35403-1700 USA
Phone: 205.345.2120 • FAX: 205.391.0799
Toll Free USA/Canada: 1.800.221.5497
phifer.com • ISO Registered



© SheerWeave is a registered trademark of PHIFER INCORPORATED.
© MICROBAN is a registered trademark of Microban Products Company.
™ UL, the UL logos and the UL mark are trademarks of UL LLC.
Photo courtesy of Rielamericano, Buenos Aires, Argentina.
© PHIFER INCORPORATED V19 021819 3033843